

Two Way FRR Wall - Timber Framing

CSTEGW30

Fire Rating: 30/30/30

CLADDING - CAVITY FIXED

15mm Shera Weatherboard - 180mm wide profile  
Face fixed with 90 x 3.55mm jolt head nails to studs.  
Pre-drill nail holes. Sikaflex-400 Fire Sealant at joints.

FRAMING

Timber framing as per NZS 3604 or  
SED complying with AS/NZS 1170 and NZS 3603.  
Framing size 90 x 45mm minimum.  
Studs at 600mm crs max. and nogs at 800 crs max.

UNDERLAY

Flexible Underlay complies with E2/AS1 Table 23 and has a  
'flammability index' not exceeding 5 can be used.

CAVITY BATTEN

Nominal 20mm thick, min. 45mm wide Timber Cavity Battens

LINING

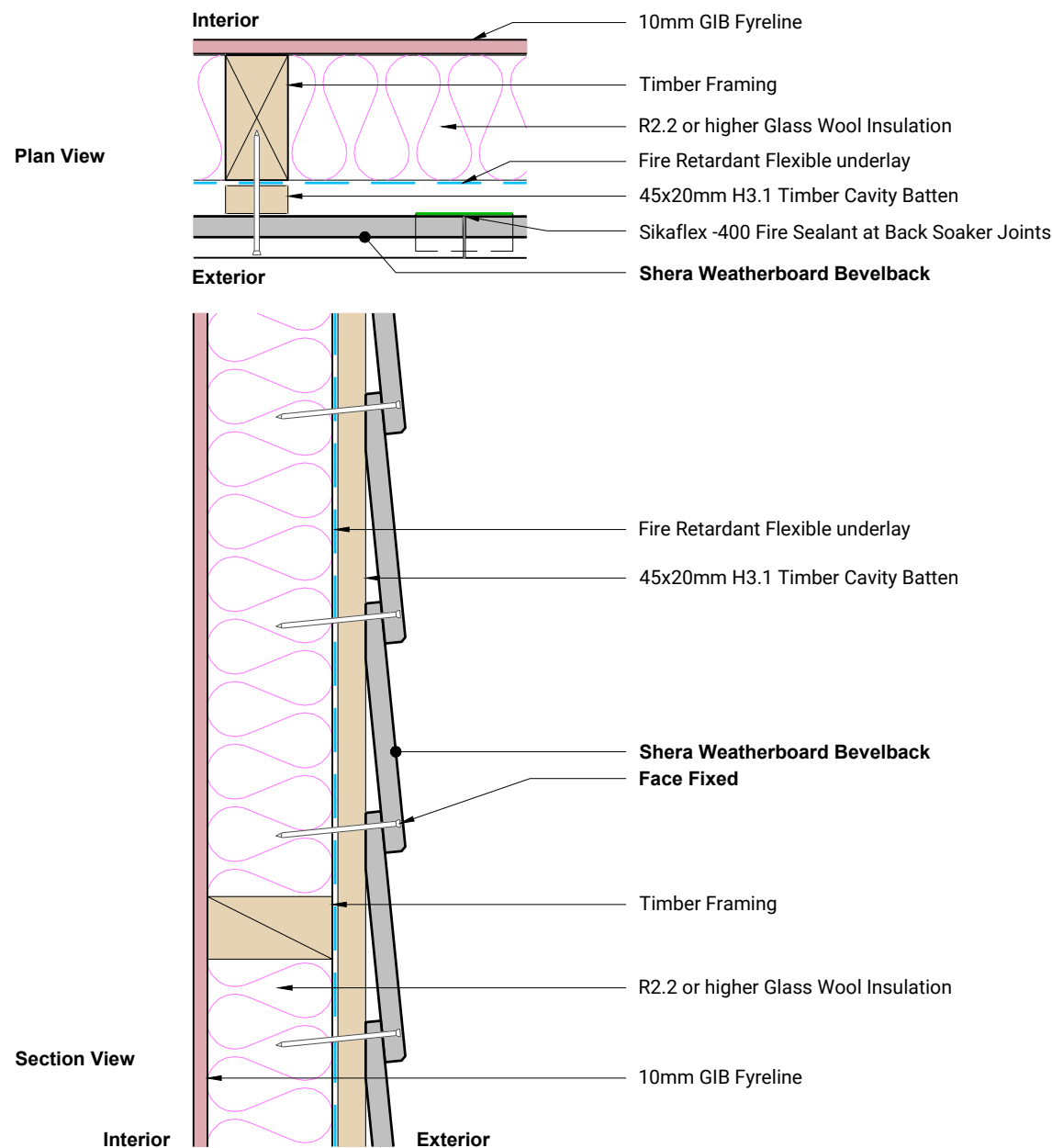
1 x 10mm thick GIB Fyreline.  
Fix with 41mm x 6g GIB Grabber High Thread Drywall Screws.  
Fix at 300mm centres to perimeter framing and intermediate studs.  
Fix 12mm from longitudinal sheet edges and 18mm from sheet ends.  
All fixing heads stopped and sheet joints taped as per GIB spec.  
Refer to GIB specification for more information.

INSULATION

90mm thick Glass Wool Insulation min. R2.2.

PENETRATION

Fire wall was tested without any penetrations.  
For any penetrations through fire rated wall please contact your  
fire engineer to ensure they are carefully considered and designed  
to not compromise our fire rated wall.  
  
Note: Any structural steel members within fire rated wall cavity  
must be separately fire protected, contact your fire engineer.



CLAD Solutions

www.cladsolutions.nz

0800 00 00 30

Read in conjunction with Shera Weatherboard Technical Manual  
Refer FTSL-PF23104 Report & AR23104 Assessment

Dwg No.

CSTEGW30

Scale  
1:5 @ A4

Date  
Jun 2025